

Nortel Alteon

2002년 6월

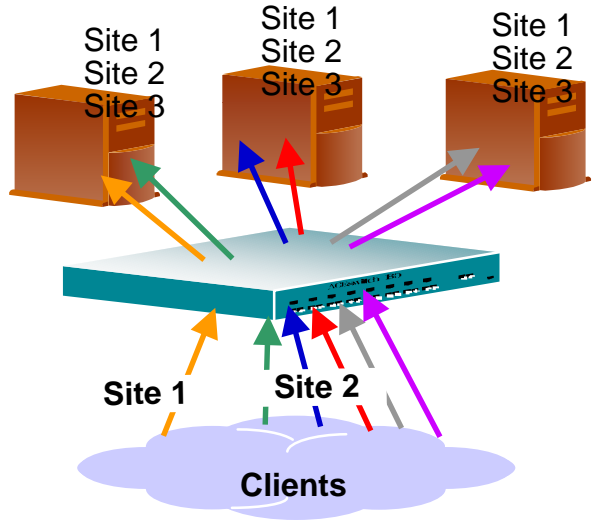
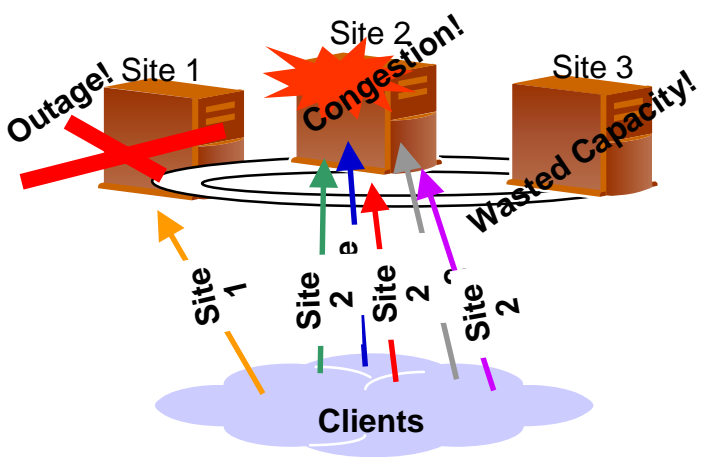


- 2~4
- 5~9
- 10~14
- 15~18
- 19~20
- 21~24
- 25~27



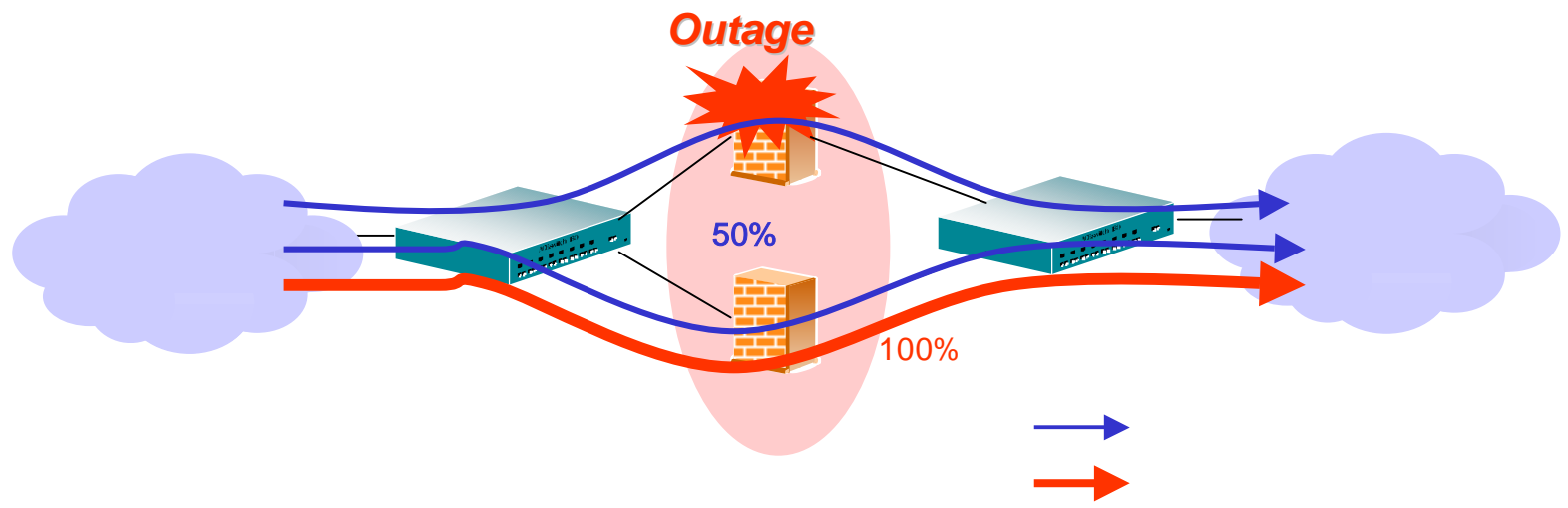
❖ 가 ,

❖ 가 →

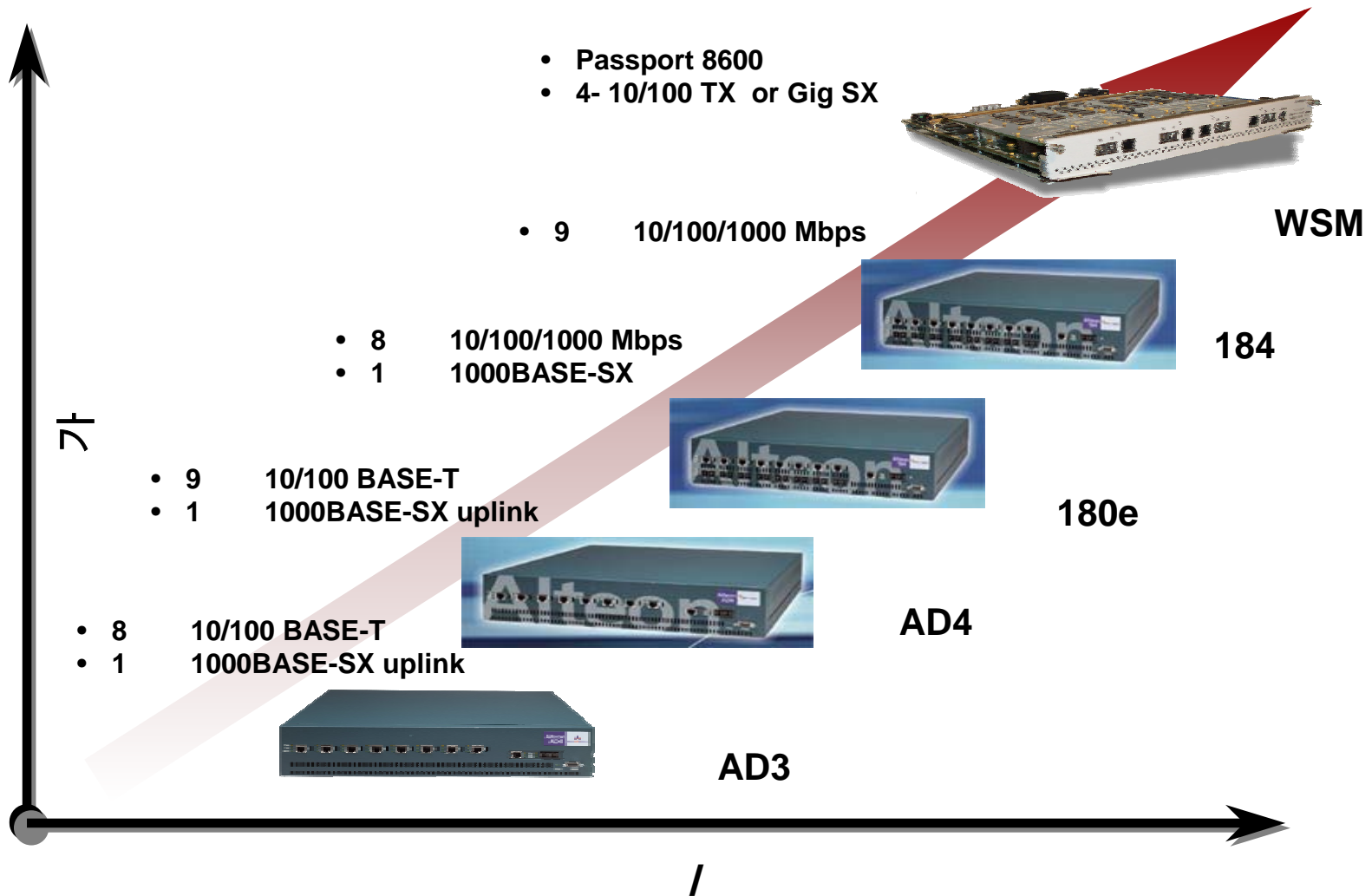


가

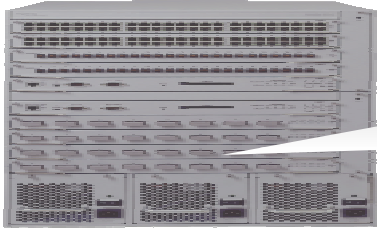

- ❖
- ❖





- ❖ Alteon
- ❖ Passport 8600 with WSM
- ❖ Alteon 180 Series
- ❖ Alteon ACEDirector Series





Passport 8600 with WSM

| | Passport 8600 | WSM |
|--|--|---|
| |  |  |
| | <ul style="list-style-type: none"> ❖ L2/L3 ❖ 8600 Series : 10 (8 I/O), 6 (4 I/O), 3 (2 I/O) ❖ N+1 redundant, load-balancing, Dual, removable fan assembly ❖ Backplane 256 Gbps ❖ AC & DC Power(Hot-swap, load sharing & balancing) | <ul style="list-style-type: none"> ✓ ✓ 4- 10/100 TX or Gig SX ✓ 80MB ✓ 512K |

Alteon 180 Series

| | Alteon 180e | Alteon 184 |
|--|--|--|
| |  |  |
| | <ul style="list-style-type: none"> ✓ 8 10/100/1000 Mbps ✓ 1 1000BASE-SX ✓ 2MB ✓ 336K ✓ 8 Gbps Backplane | <ul style="list-style-type: none"> ✓ 9 10/100/1000 Mbps ✓ (1-8) 4 MB ✓ 9 : 8 MB ✓ 512K ✓ 8 Gbps Backplane |

Alteon ACEDirector Series

| | ACEDirector 3 | ACEDirector 4 |
|--|---|---|
| |  |  |
| | <ul style="list-style-type: none"> ✓ 8 10/100 BASE-T ✓ 1 1000BASE-SX uplink ✓ 2 MB ✓ 336K ✓ 8 Gbps Backplane | <ul style="list-style-type: none"> ✓ 9 10/100 BASE-T ✓ 1 1000BASE-SX Uplink ✓ (1~8) 4 MB ✓ 9 : 8 MB ✓ 512K ✓ 8 Gbps Backplane |

- ❖ Load Balancing
- ❖ Active - Active
- ❖ Virtual Matrix
- ❖ Distributed Processing

Load Balancing

- ❖
 - ✓ Server Load Balancing / Global Server Load Balancing
 - ✓ Firewall Load Balancing (Bridging & Routing)
 - ✓ VPN Gateway Load Balancing / Load Balancing
 - ✓ Router Load Balancing / WAP Server Load Balancing
 - ✓ LDAP Server Load Balancing / Web Cache Redirection
 - ✓ URL-based Web Cache Redirection / DNS redirection and Load Balancing
 - ✓ RTSP(Real Time Streaming Protocol)Load Balancing

- ❖ Load Balance
 - ✓ Least Connections (+weighting)
 - ✓ Round Robin (+weighting)
 - ✓ Hashing (Operate differently based on configuration)
 - ✓ Minimum Misses
 - ✓ (Response Time)
 - ✓ (Bandwidth)
 - ✓ Maximum Connections

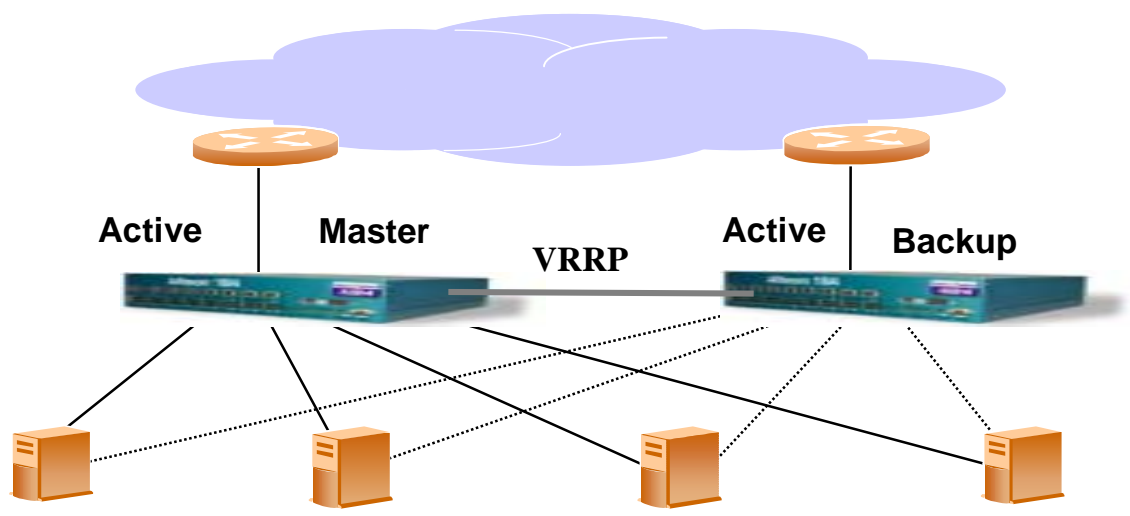
Active - Active

❖ VRRP (Active - Standby)

Active - Active)

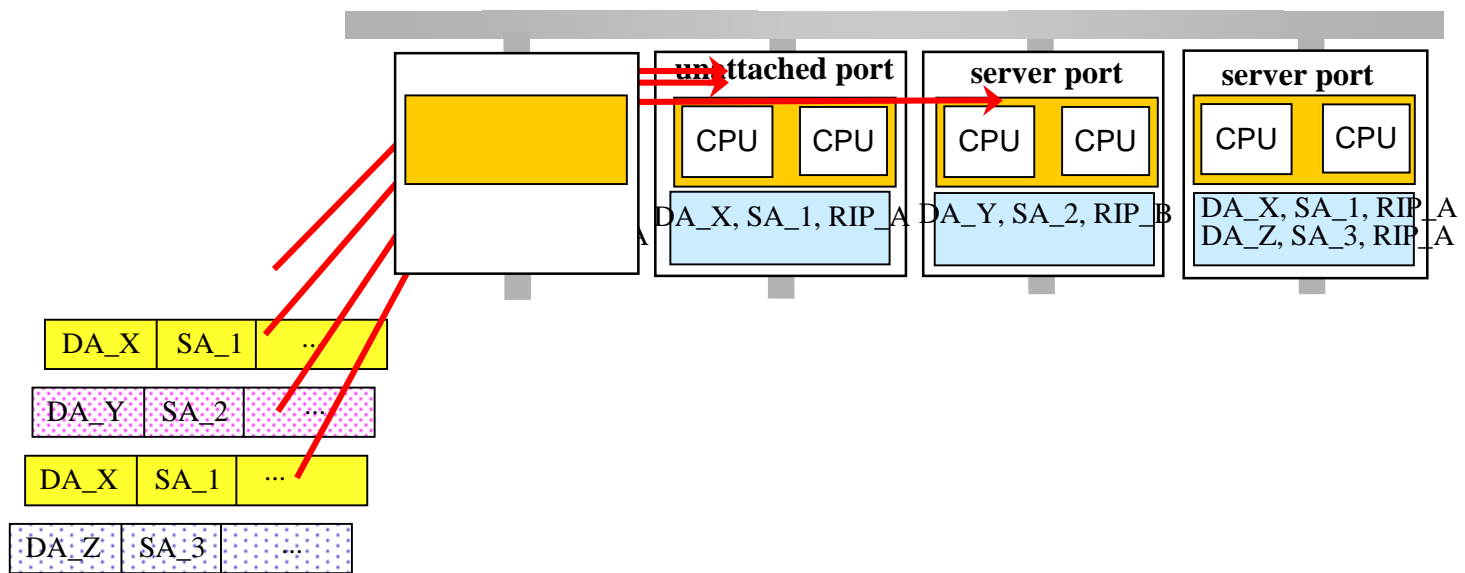
✓ Active - Active :

❖ Fail-over 가 () Fail-over 가



Virtual Matrix

- ❖ CPU CPU Layer 2, 3
- ❖ Hash CPU
- ✓ Hash
- ✓ CPU





Network Traffic

✓ 18 ~ 20 Processor

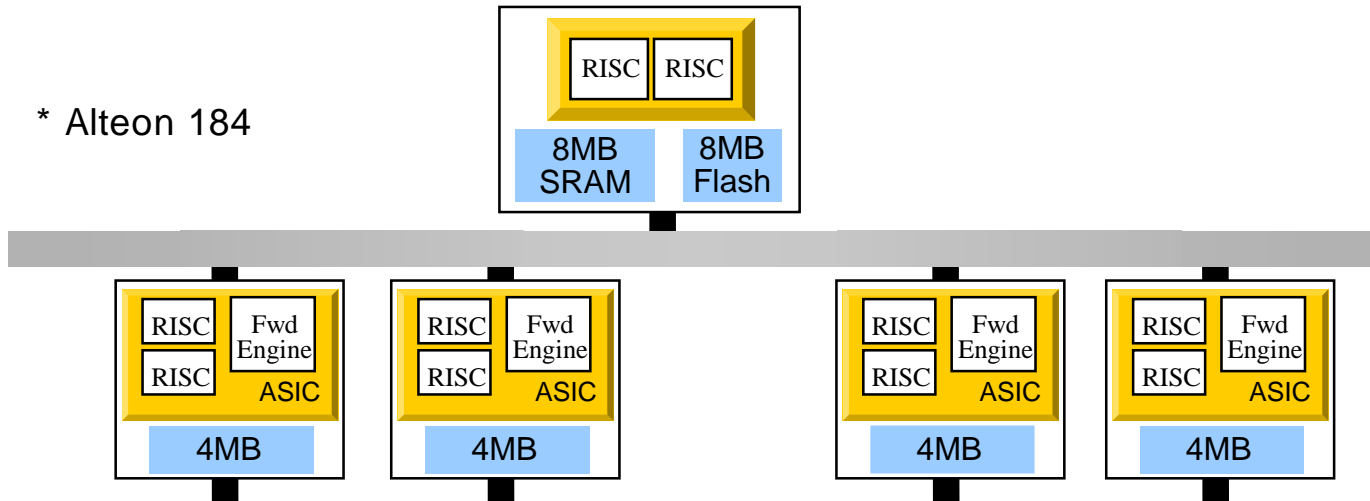


Port ASIC

Forwarding Engine 2

RISC Processor

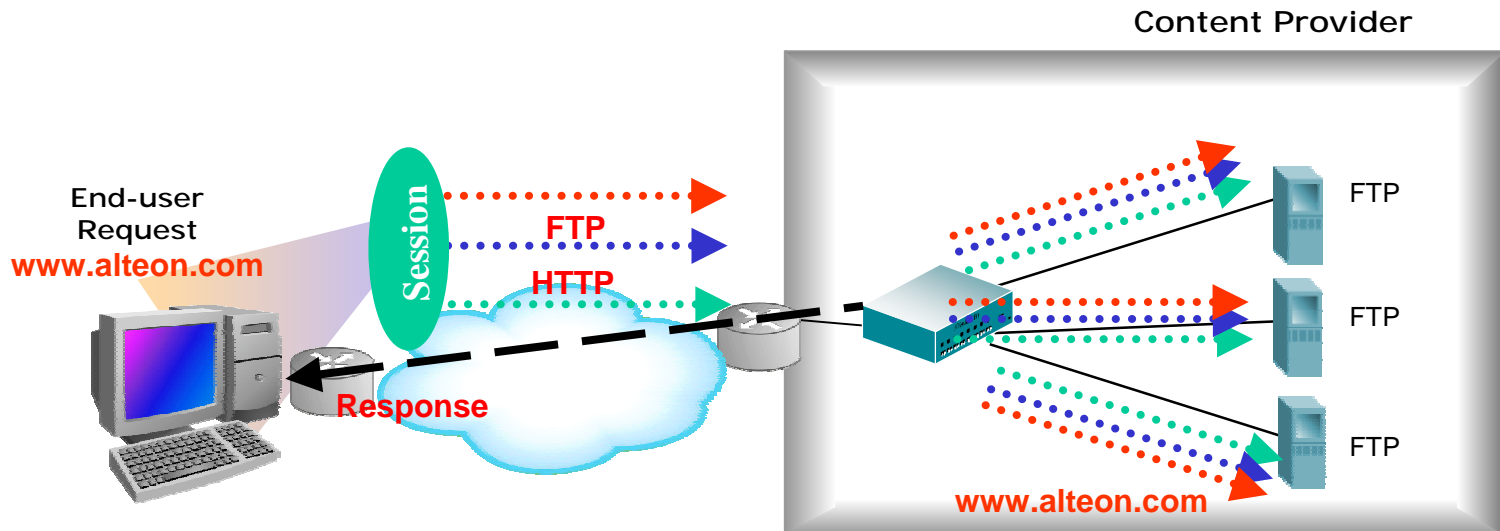
* Alteon 184



- ❖ Server Load Balancing
- ❖ Firewall Load Balancing
- ❖ Web Cache Redirection

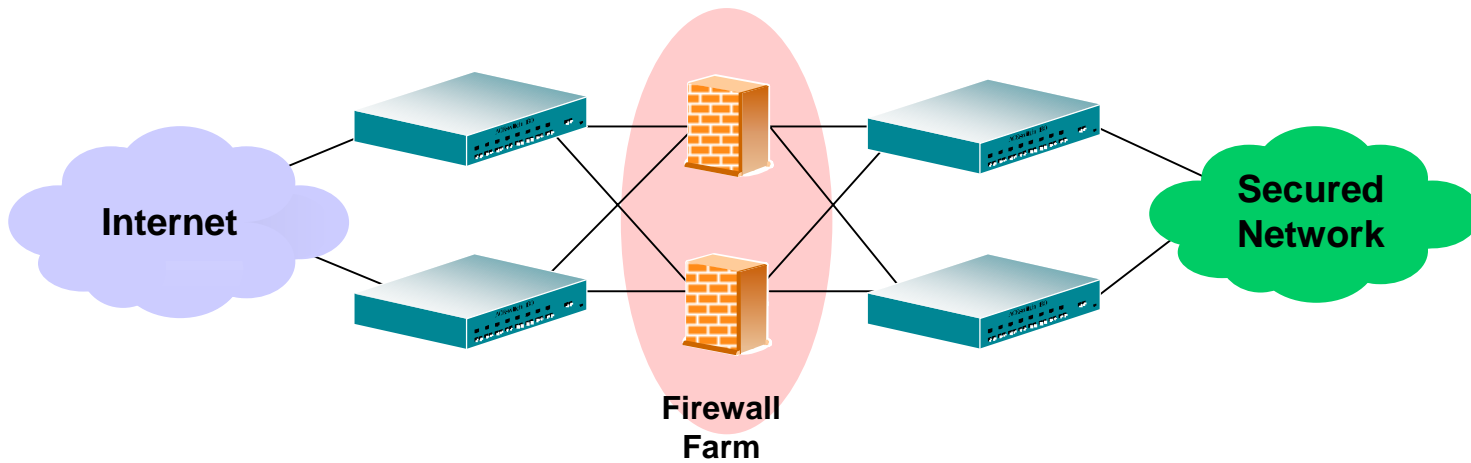
- ❖ Downtime

가





Fail - Over

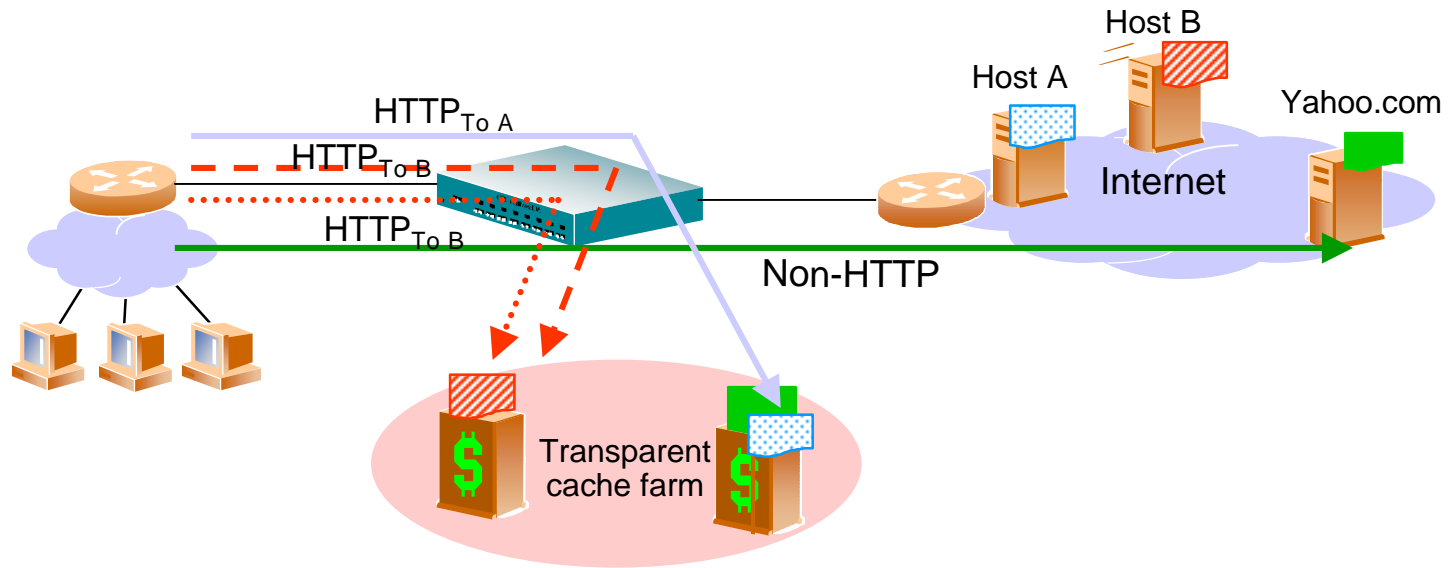


Web Cache Redirection

❖ 가

❖ (Cacheable)

가





,



- ❖ 가
Downtime

- ❖ Reference 가

- ❖ 가 .
Fail-over 가

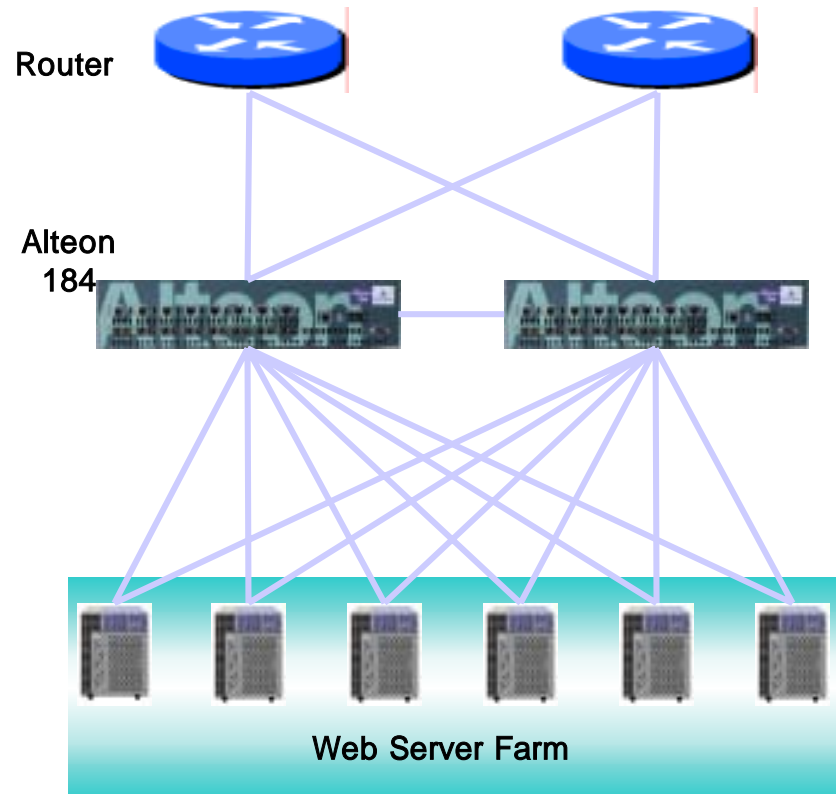
- ❖ Server Load Balancing
- ❖ Firewall Load Balancing
- ❖ Web Cache Redirection

❖ Web Server Load balancing

❖ 가
IP Address

❖ Clustering

❖ Bottleneck

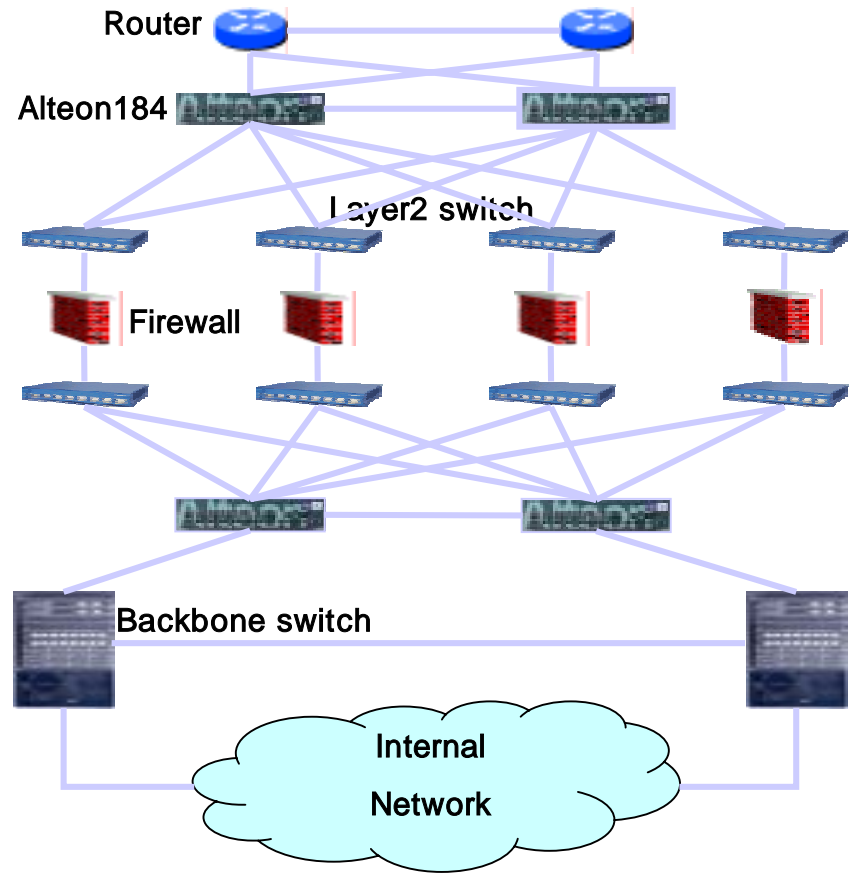


❖ Layer 2 switch
full mesh load balancing

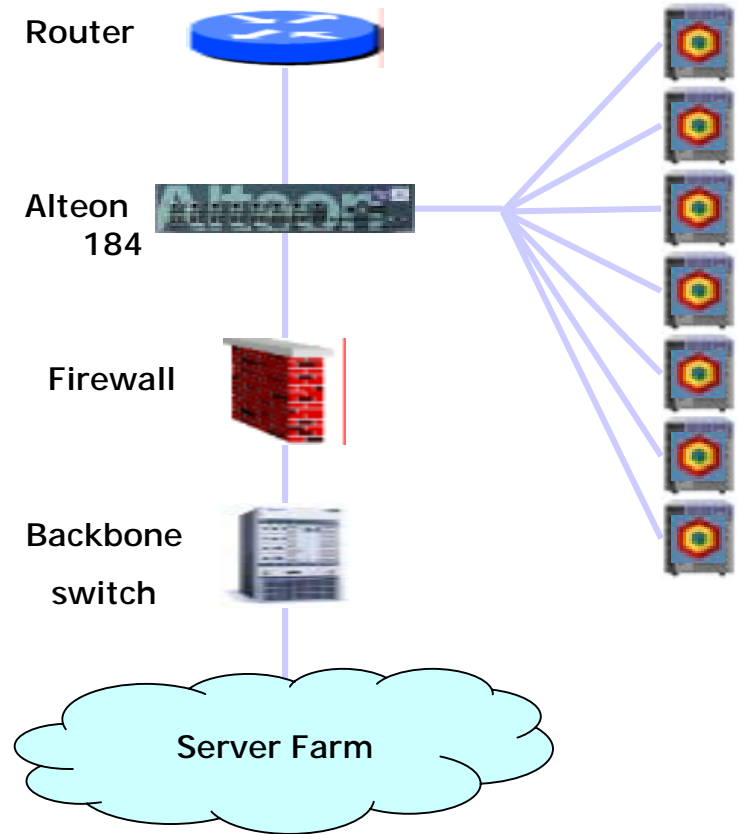
❖ Redundancy

❖ VRRP ,
Option

✓
가



- ❖ Inktomi
- ❖ Cache Server 1
- ❖ Health , Fail
- Real





❖ Nortel Networks

1995
 1998
 2001 KOSDAQ

SI / /

45 78

: 27.15 : 322 (2001)

KT

가

, ,

VOD

가



WW Partners

[Redacted] 1895 (1976 Northern Telecom)
2000 Alteon

[Redacted]

[Redacted] 50,000 (2001)

[Redacted] 2001 : 175

[Redacted] 2001 R&D : 18%